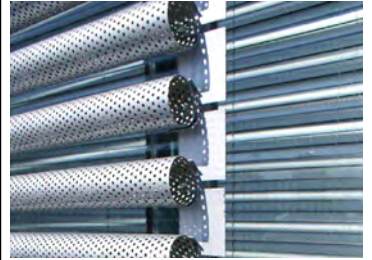
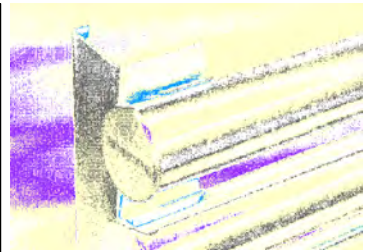


TECHNICAL MANUAL

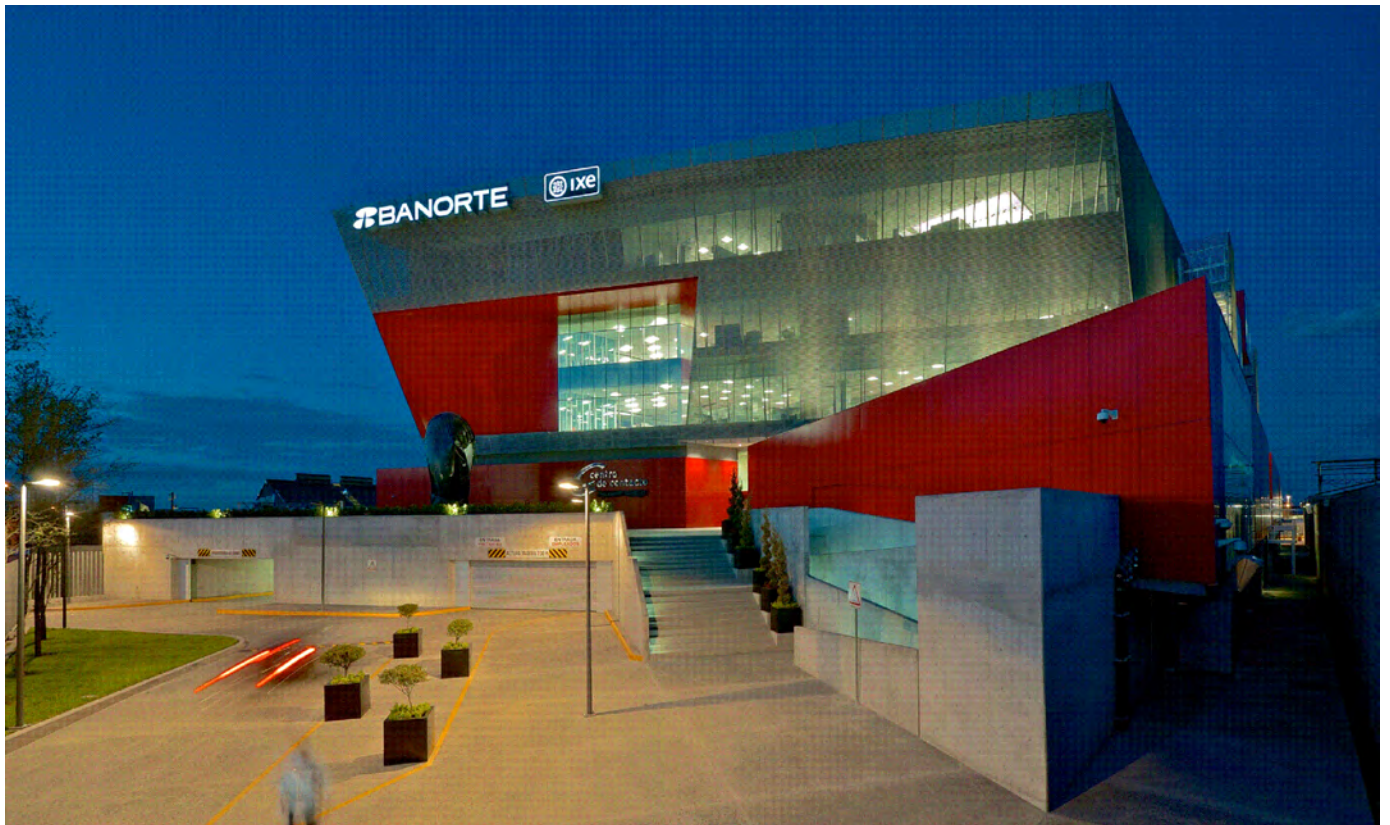
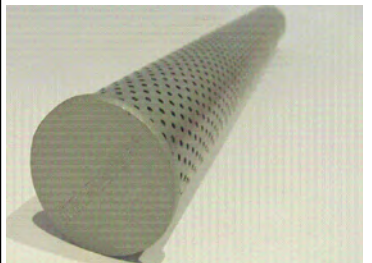
LOUVER



TUBRISE LOUVRE

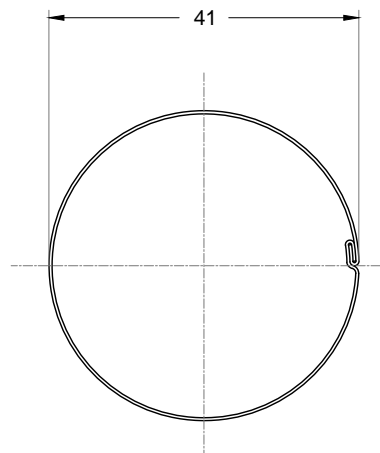
Project Engineering and Technical Support

HunterDouglas 
Architectural



PRODUCT DESCRIPTION

MATERIAL	: Zinalume / Aluminum
THICKNESS	: Zinalume 0.4 / 0.5 / 0.6 mm Aluminum 0.6 / 0.7 mm
COLORS	: Available in over 100 standard colors and custom colors
USES	: Louver
FINISH	: Smooth or perforated
MAXIMUM LENGTH	: We recommend that the length not exceed 6 meters
YIELD	: 19.6 ml / m ² (Separation 51 mm between axes)

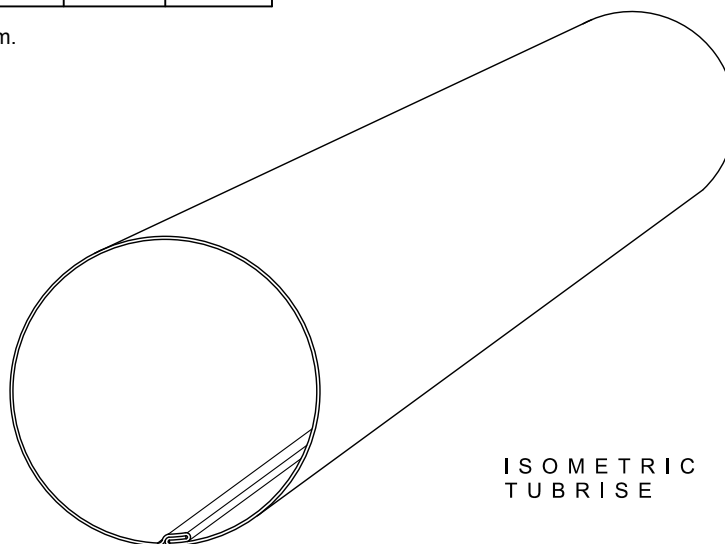


TUBRISE SECTION
ZINCALUME, 0.4 / 0.5 / 0.6 mm
ALUMINIUM, 0.6 / 0.7 mm
COD: 003021

WEIGHT TABLE Tubrise Panel

PRODUCT	MATERIAL	THICKNESS	WEIGHT Kg/ml	WEIGHT Kg/m ²
TUBRISE	ZINCALUME	0.4 mm	0.45	8.8
		0.5 mm	0.56	11.0
		0.6 mm	0.67	13.2
	ALUMINIUM	0.6 mm	0.23	4.4
		0.7 mm	0.26	5.2

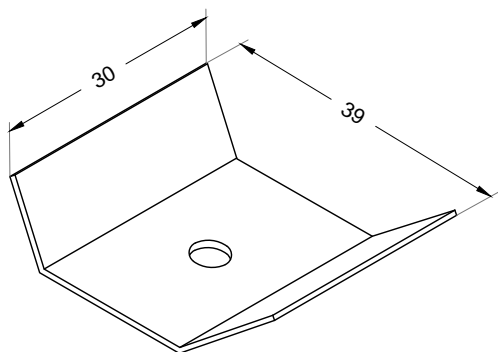
*Weight table considers space of 51 mm.



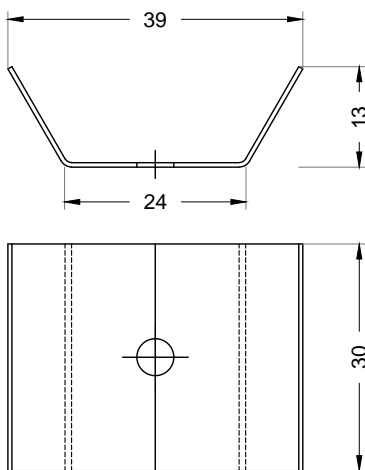
ISOMETRIC
TUBRISE

NOTE: THE MATERIAL, SETTING FINISH AND ANCHORS MUST BE DETERMINED BASED ON THE PROJECT SPECIFICATION.

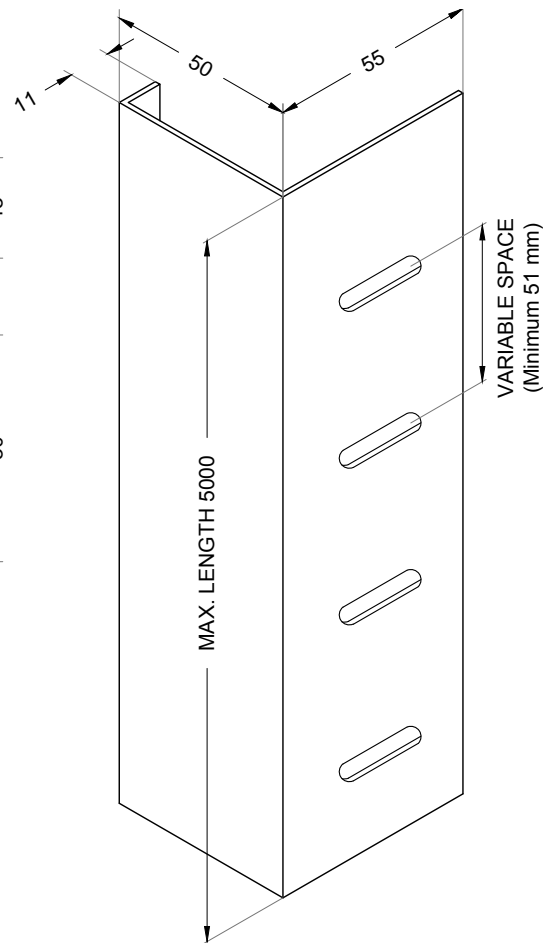
COMPONENTS



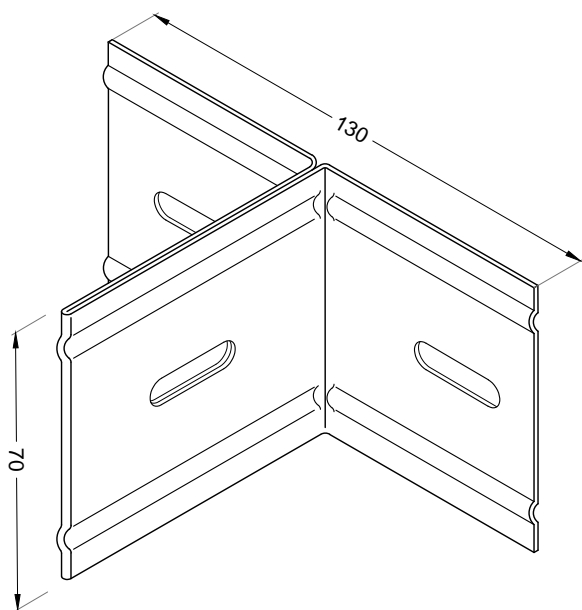
TUBRISE SETTING CLIP
ZINCALUME 1.0 / 1.2 / 1.5 mm
COD: 002040



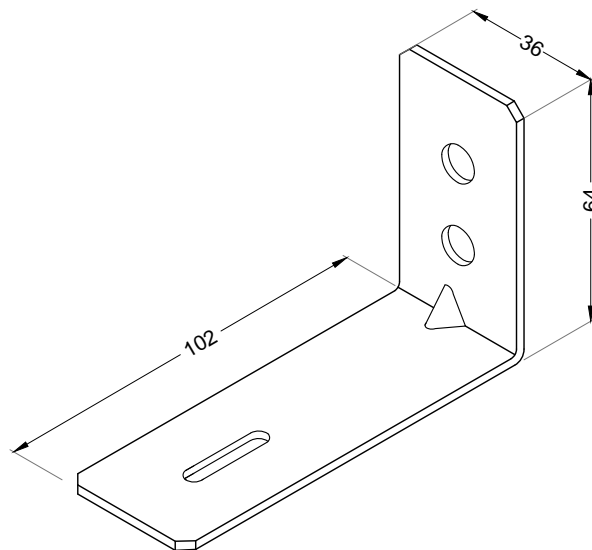
SETTING RIVET
Ø4 x 16mm



SCORED MULLION PROFILE
A: ZINCALUME 1.5 mm
0 0 2 1 2 5



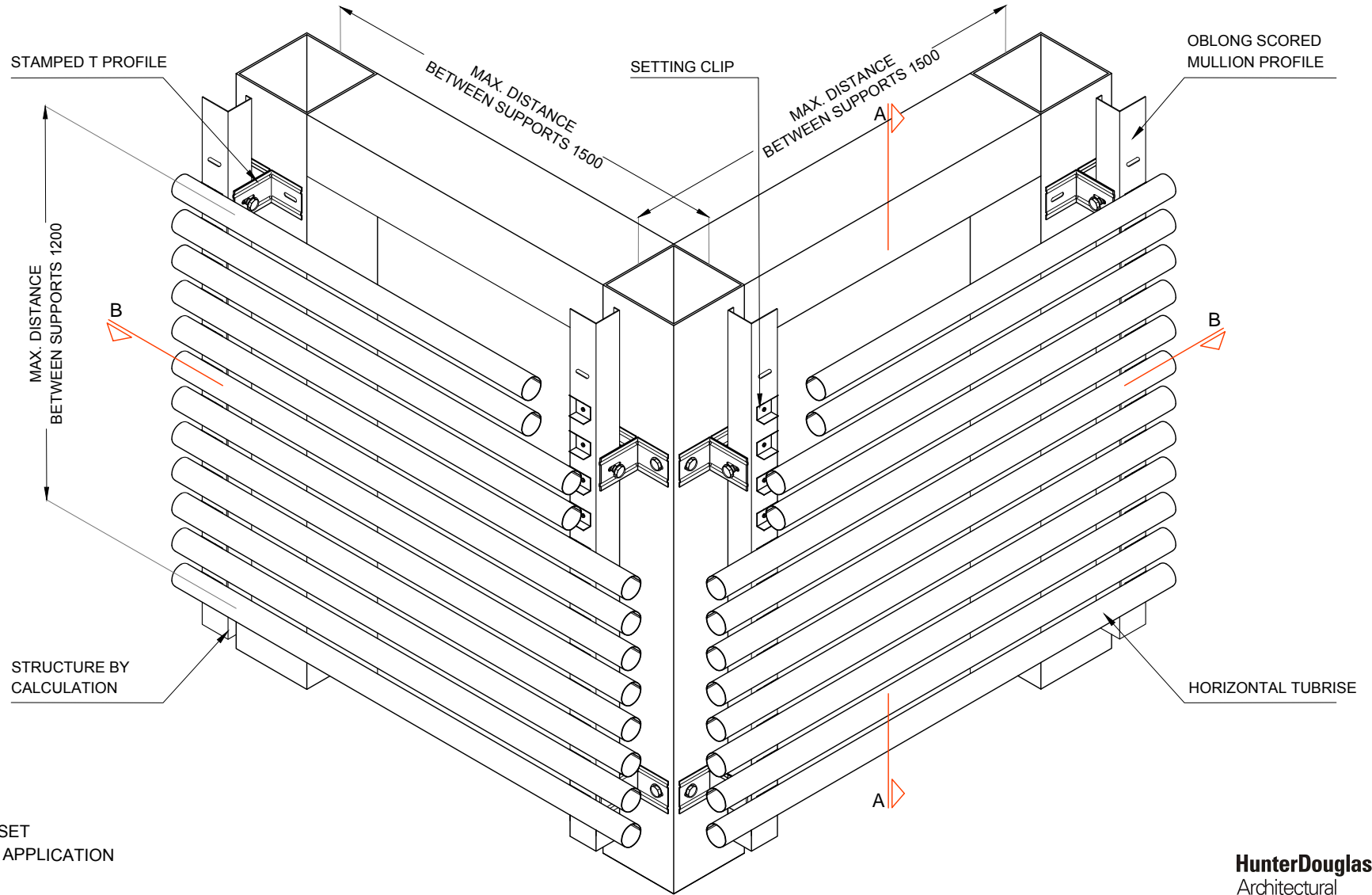
STAMPED ALUMINUM PROFILE
ALUMINUM 1.2 mm
COD: 002130



SETTING BRACKET
ALUMINUM 2 mm
COD: 002079

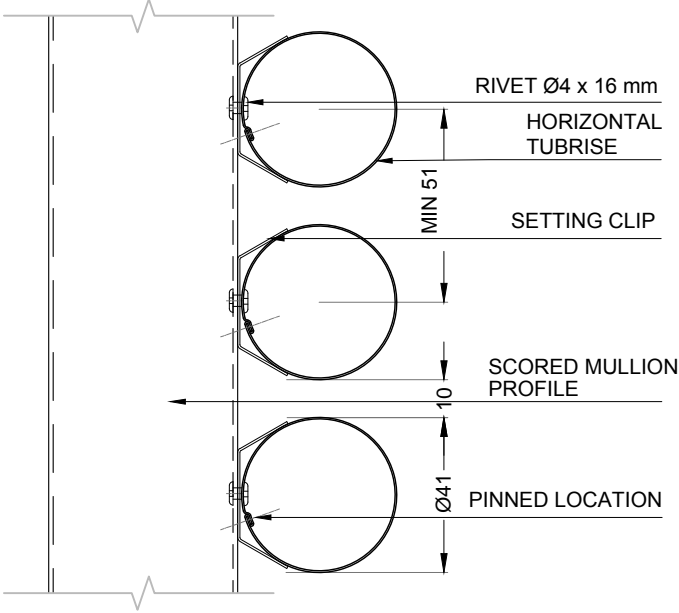
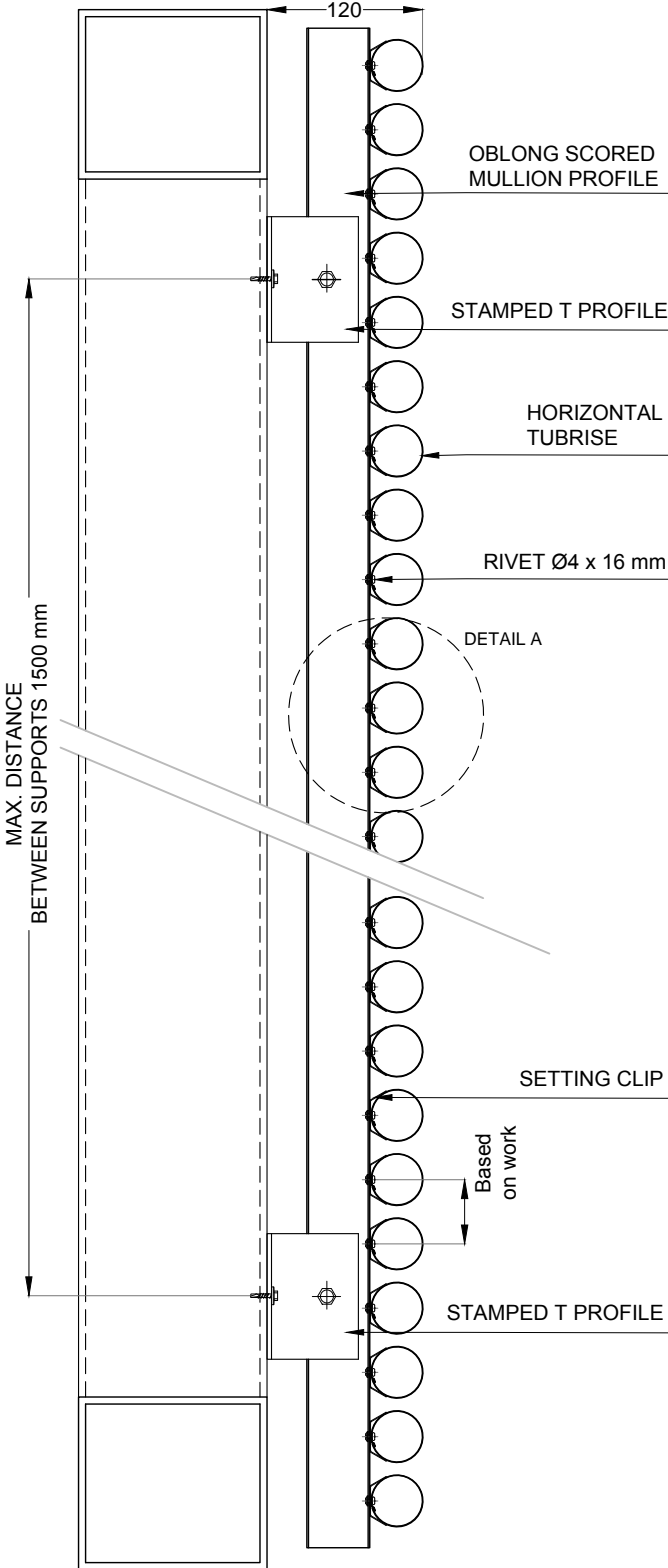


ASSEMBLED SET HORIZONTAL APPLICATION



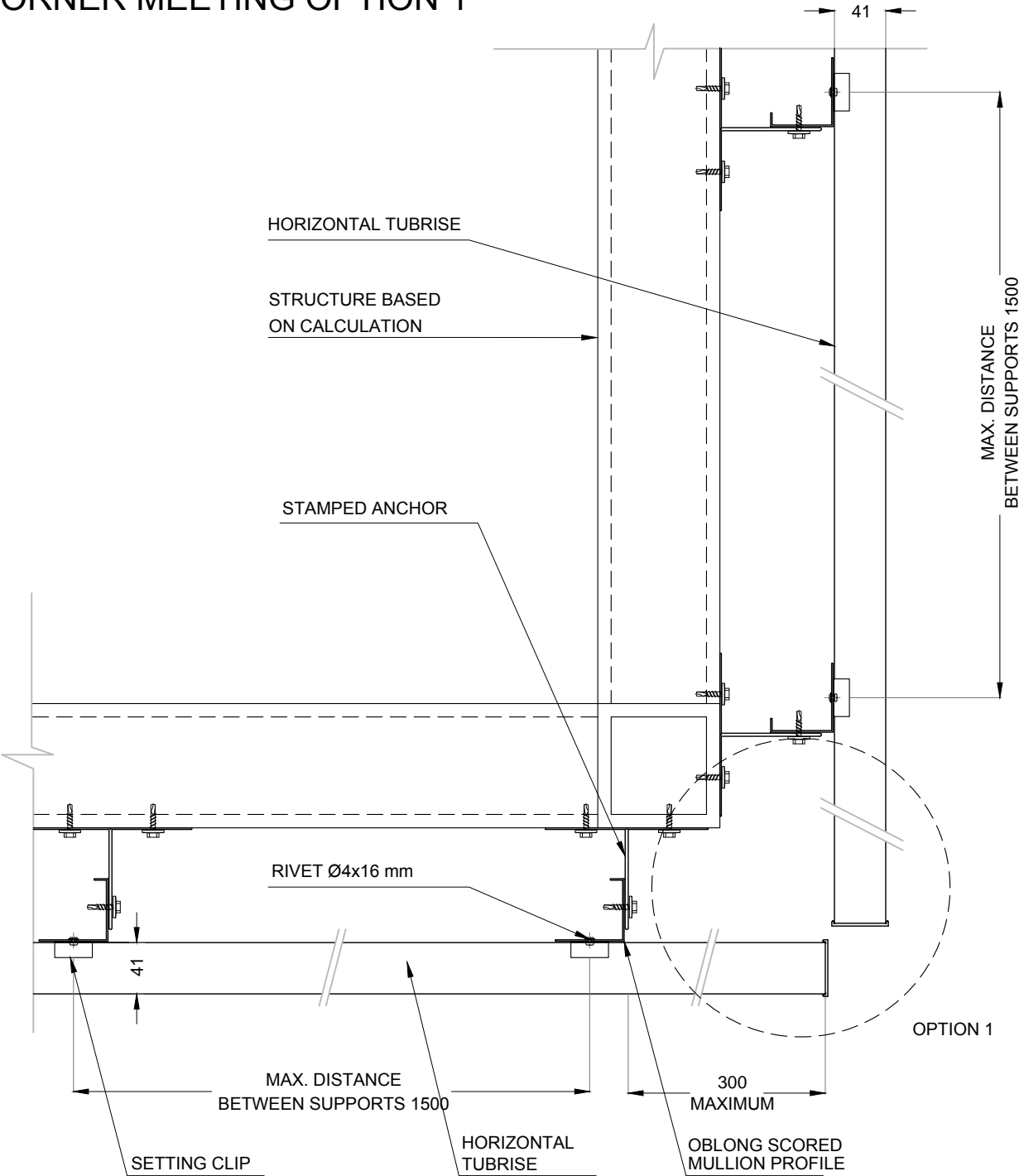
ASSEMBLED SET
HORIZONTAL APPLICATION
TUBRISE

CUT A - A HORIZONTAL APPLICATION



TUBRISE DETAIL A
Scale 1:2

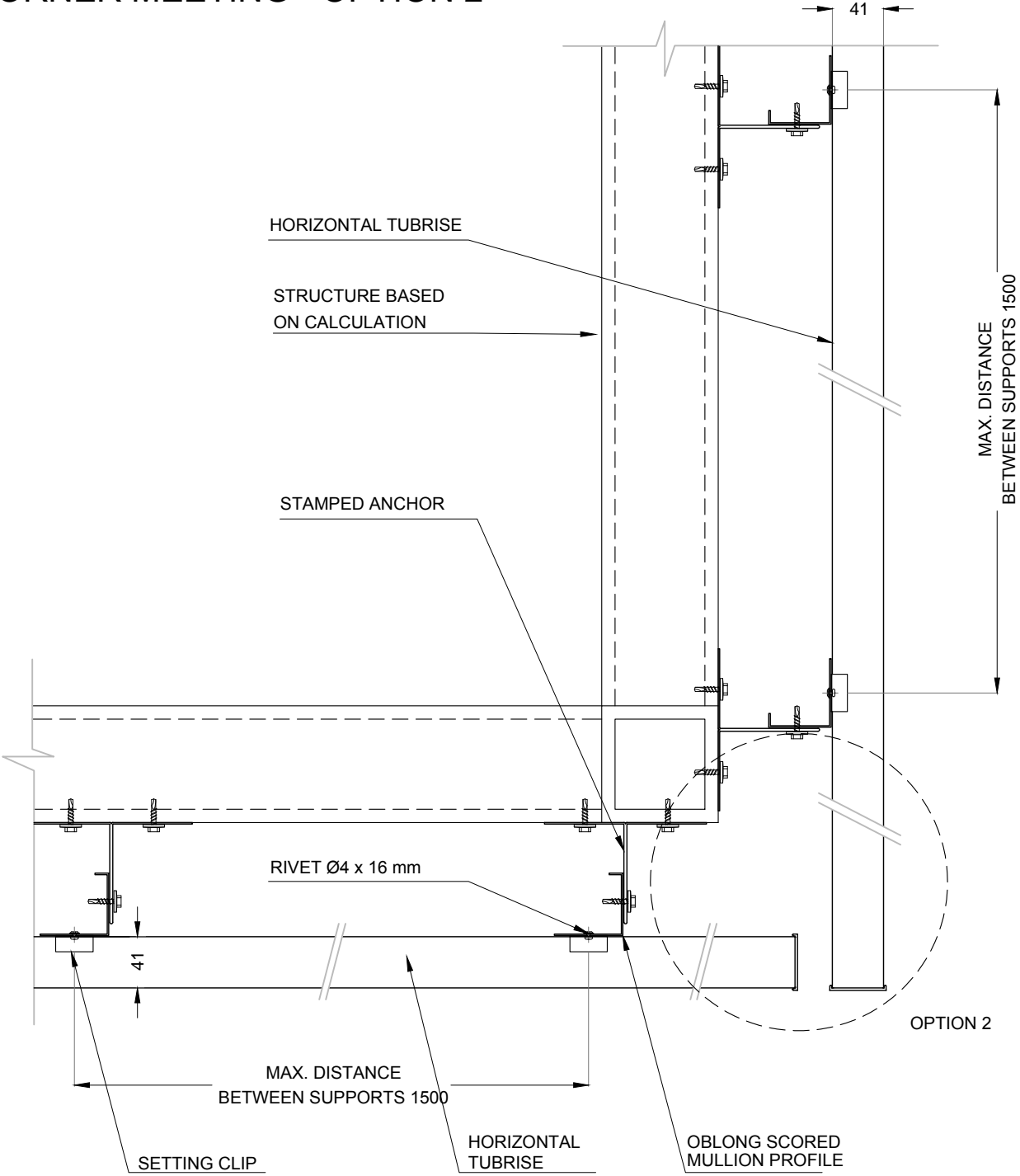
CUT B - B
HORIZONTAL APPLICATION
CORNER MEETING OPTION 1



CUT B-B
HORIZONTAL APPLICATION - OPTION 1
TUBRISE
Scale 1:5



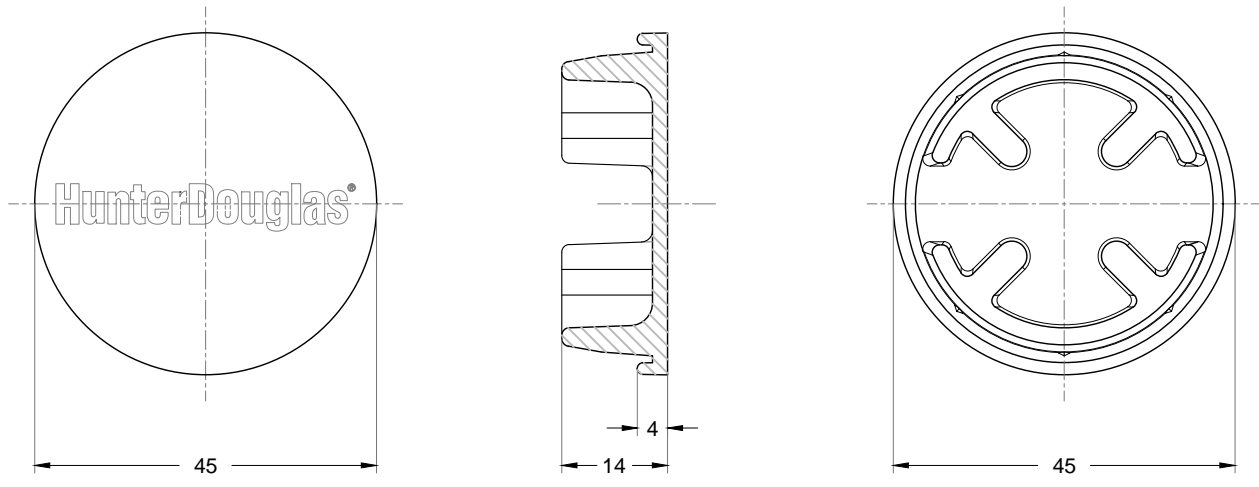
CUT B - B
HORIZONTAL APPLICATION
CORNER MEETING - OPTION 2



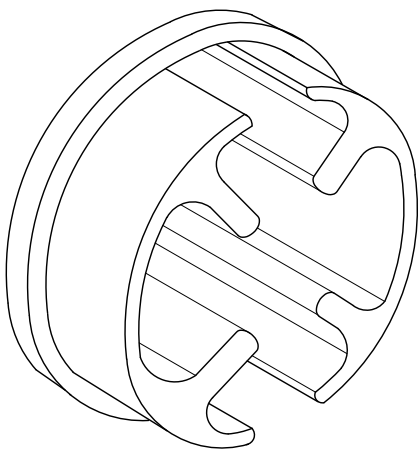
CUT B - B HORIZONTAL APPLICATION OPTION 2
TUBRISE
Scale 1:5



DETAILED COVER WITHOUT AXIS



COVER WITHOUT AXIS
TUBRISE
MATERIAL: ALUMINUM
COD: 002059

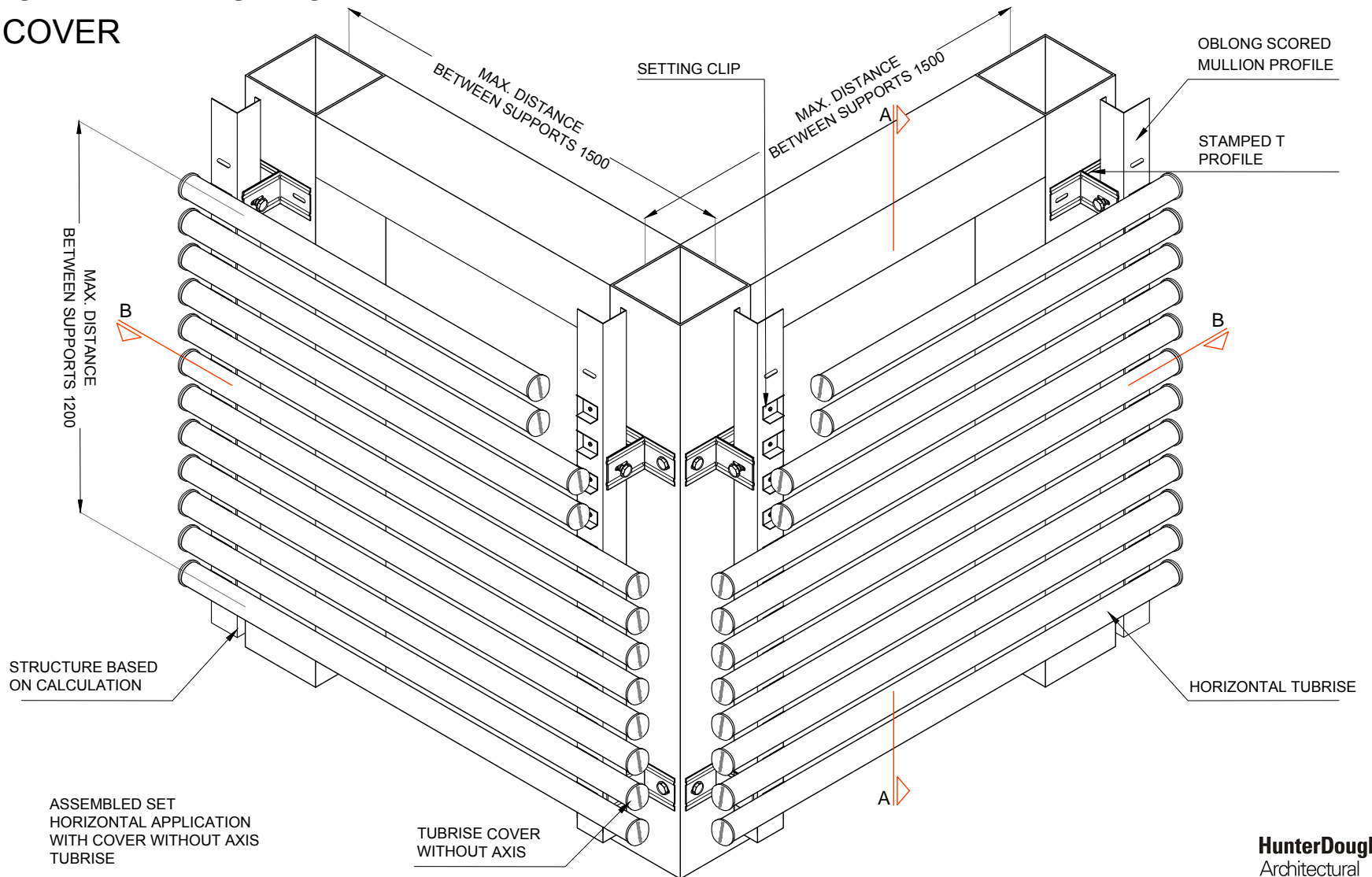


ISOMETRIC
INTERIOR COVER
ALUMINUM TUBRISE
COD: 002059

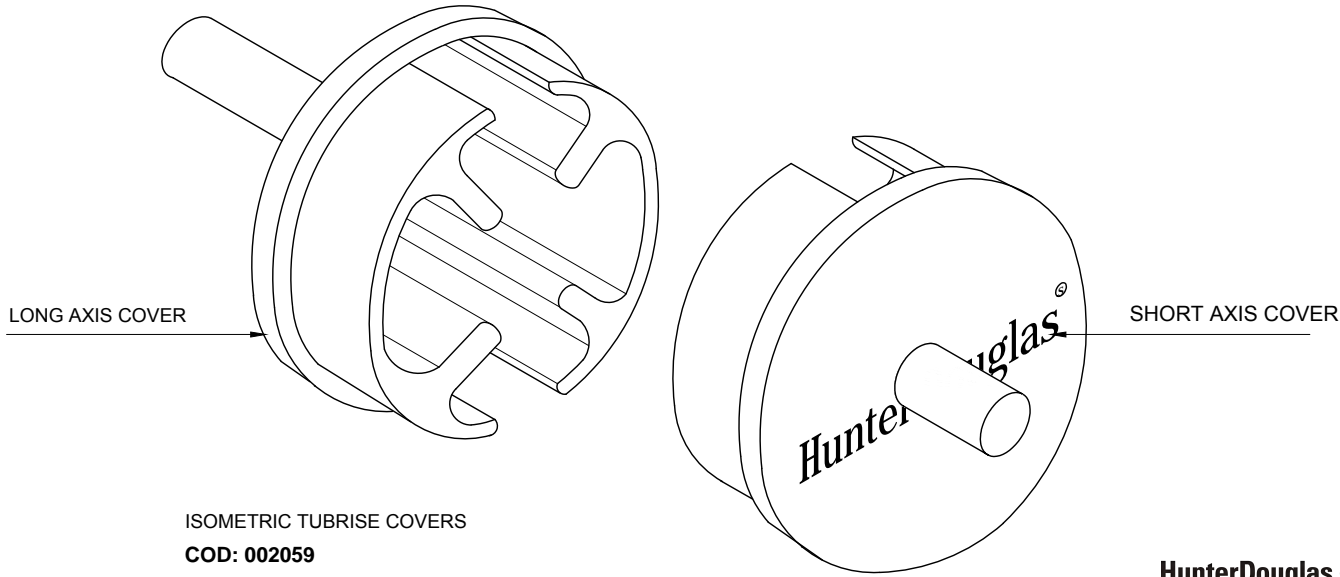
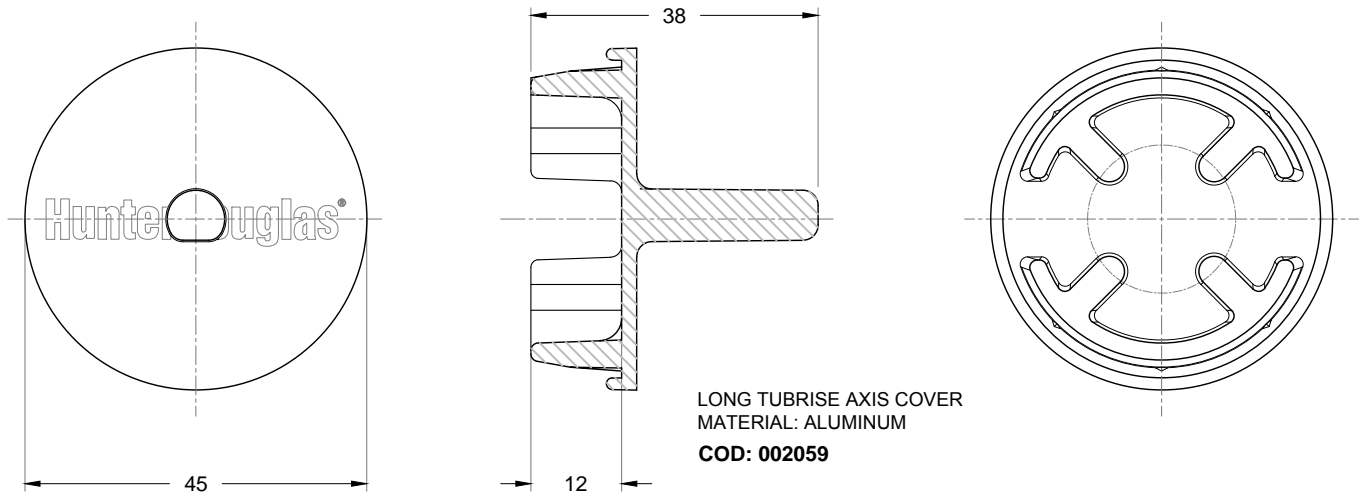
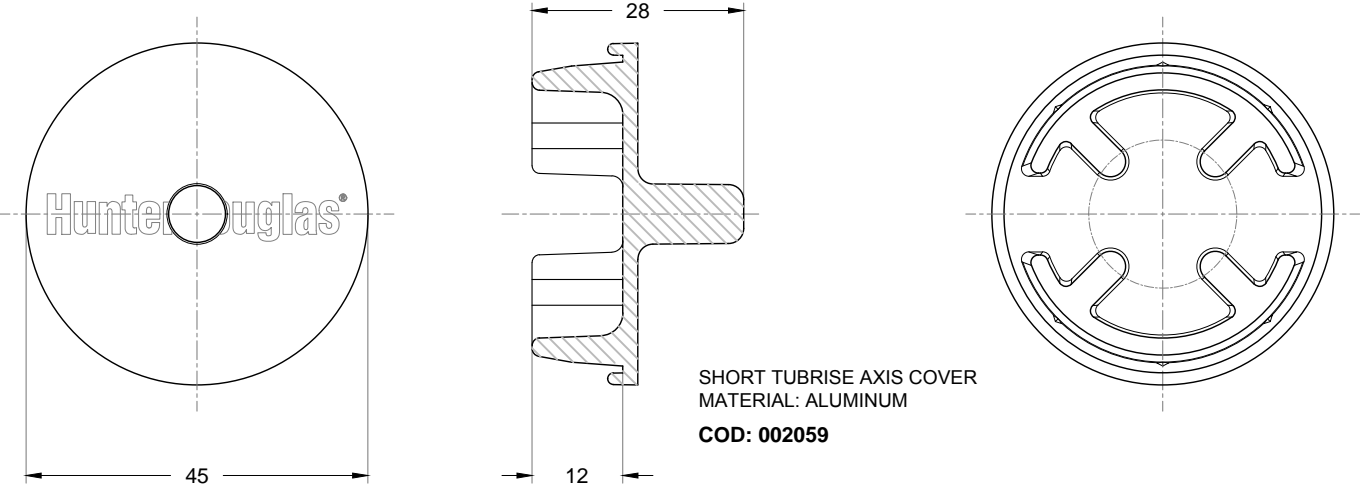


ISOMETRIC
EXTERIOR COVER
ALUMINUM TUBRISE
COD: 002059

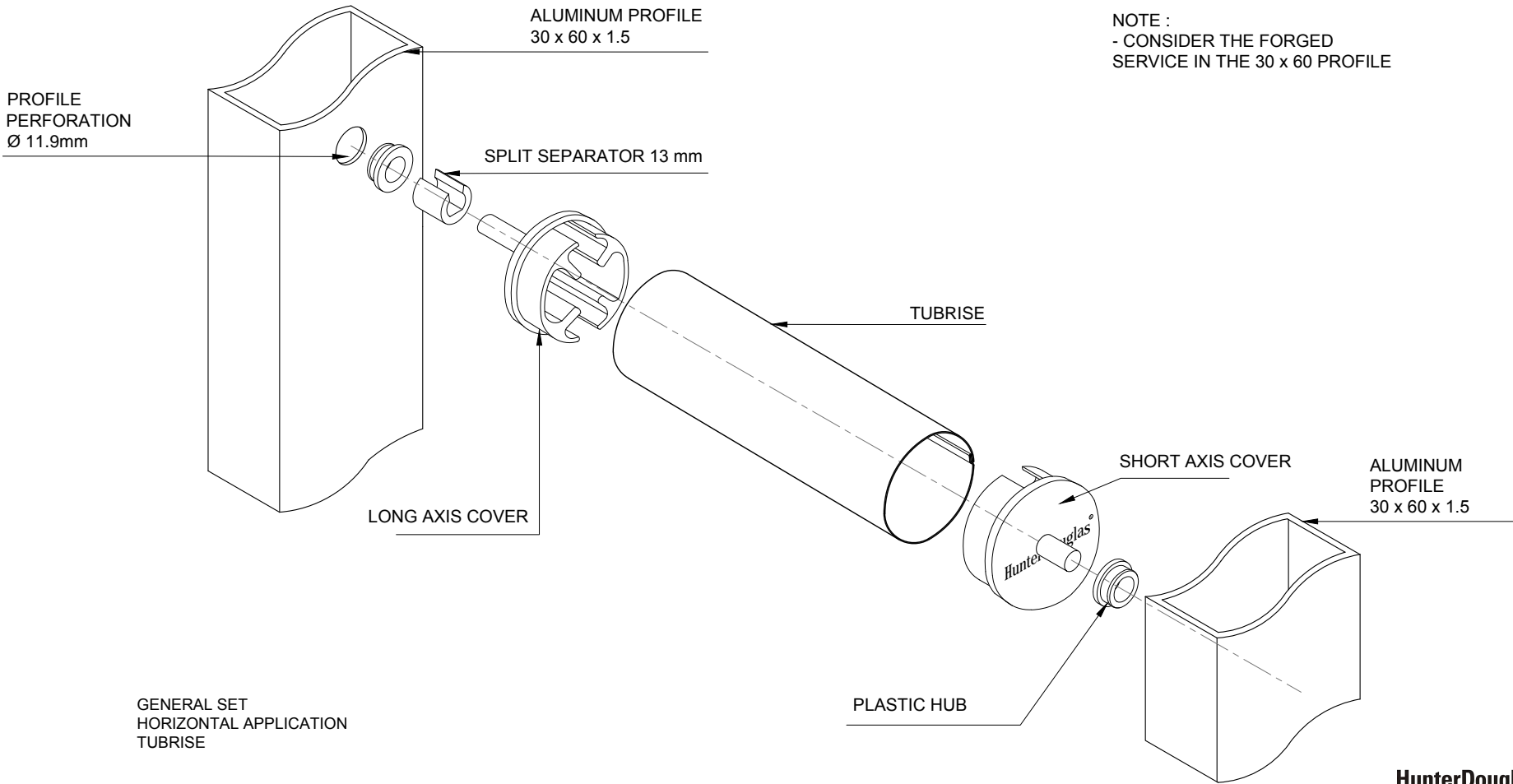
ASSEMBLED SET
HORIZONTAL APPLICATION
WITH COVER



DETAIL COVERS WITH AXES

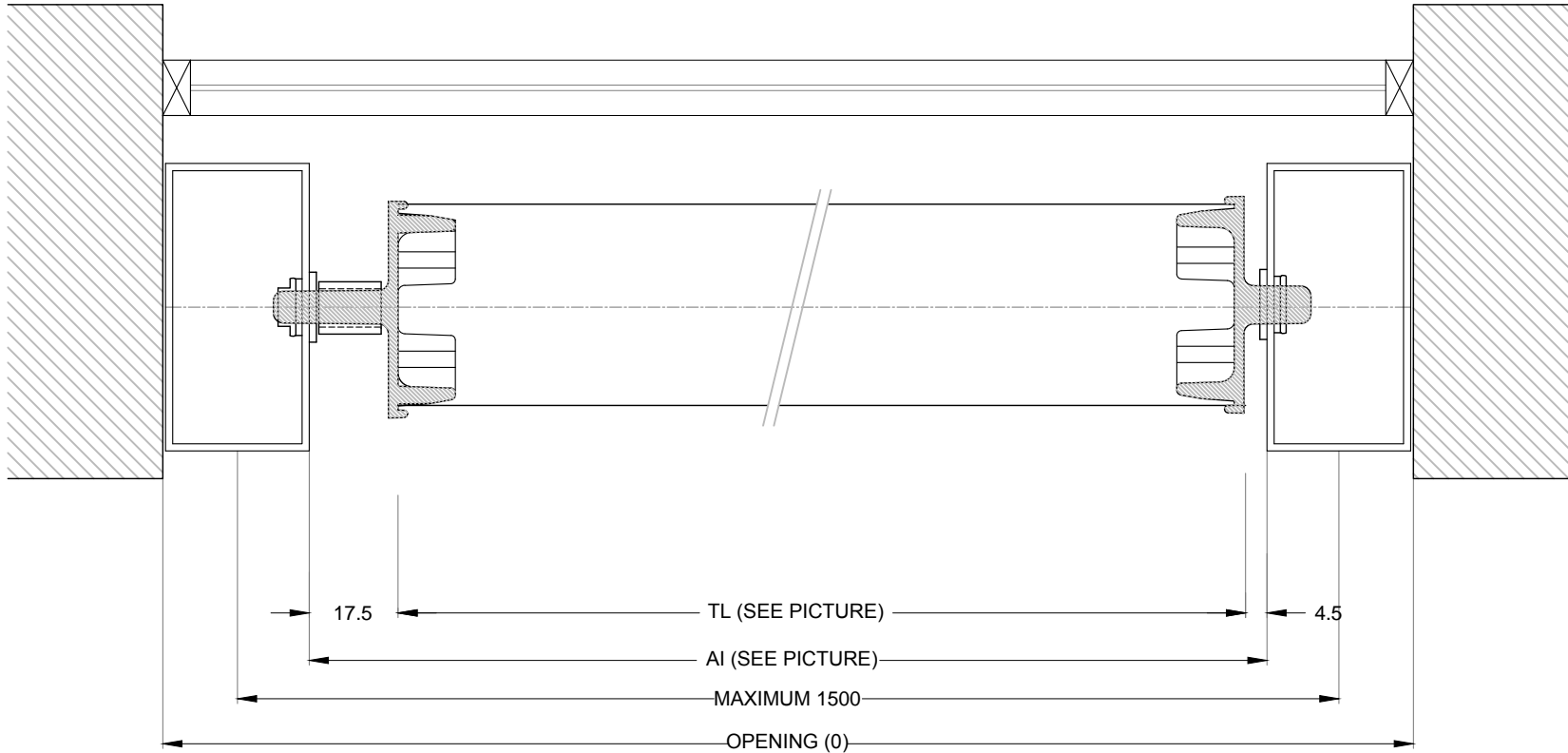


GENERAL SET HORIZONTAL
APPLICATION
COVERS WITH AXES



GENERAL SET
HORIZONTAL APPLICATION
TUBRISE

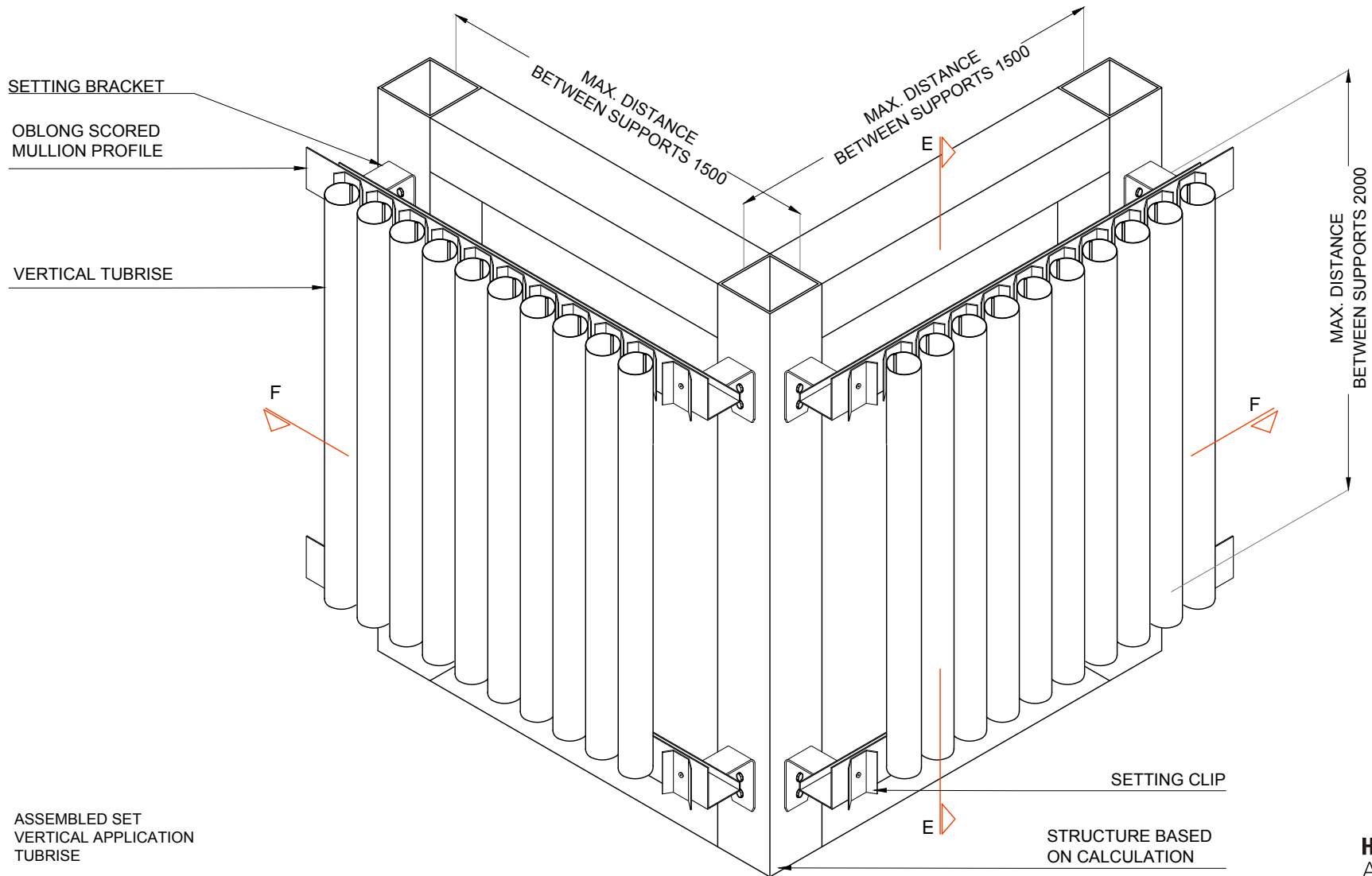
DETAIL OF DISTANCING
WITHIN OPENING



DISTANCING
APPLICATION INSIDE OF OPENING
TUBRISE

TUBRISE LENGTH
TL : AI - 22

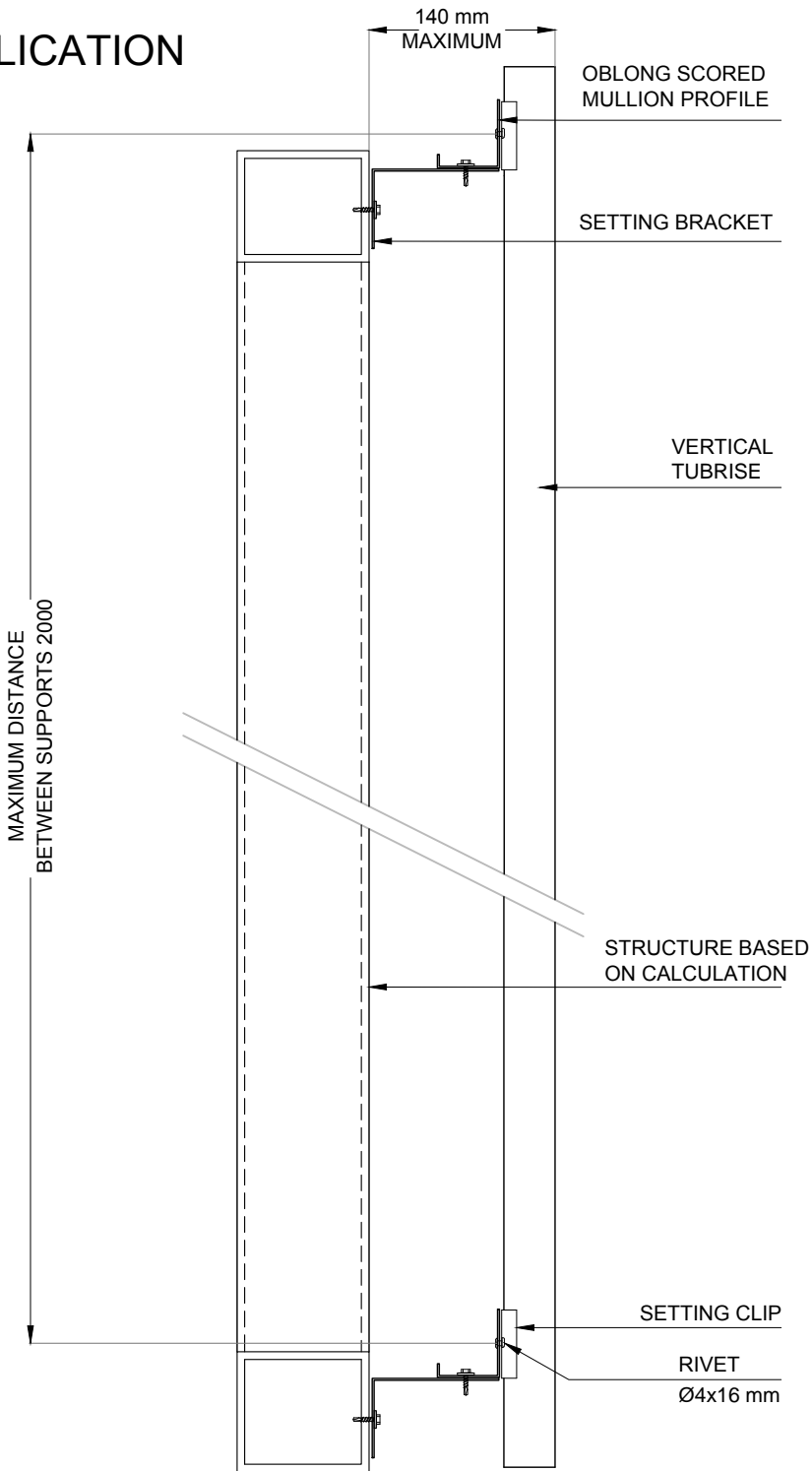
ASSEMBLED SET VERTICAL APPLICATION



ASSEMBLED SET
VERTICAL APPLICATION
TUBRISE

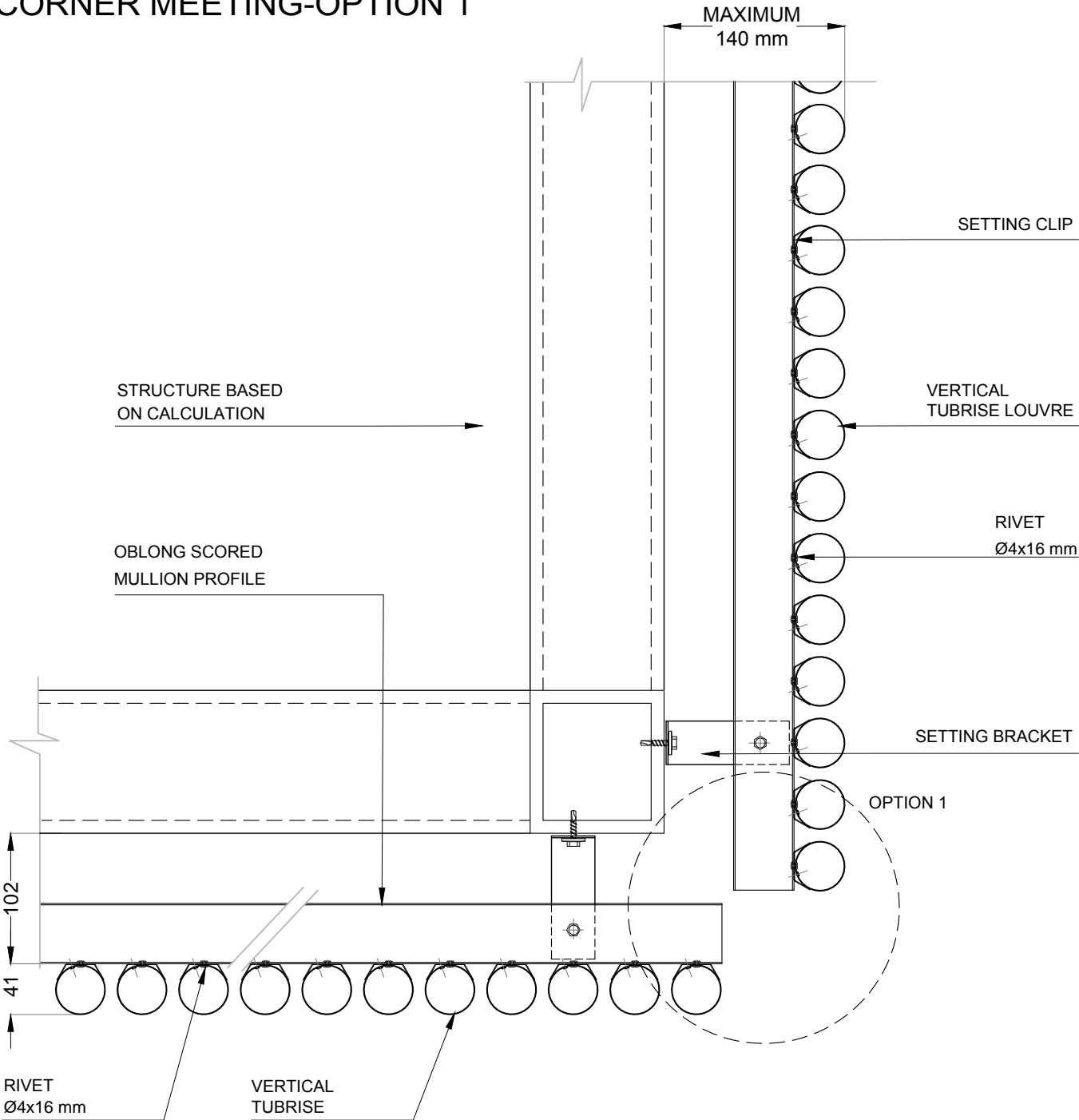
STRUCTURE BASED
ON CALCULATION

E - E CUT
VERTICAL APPLICATION



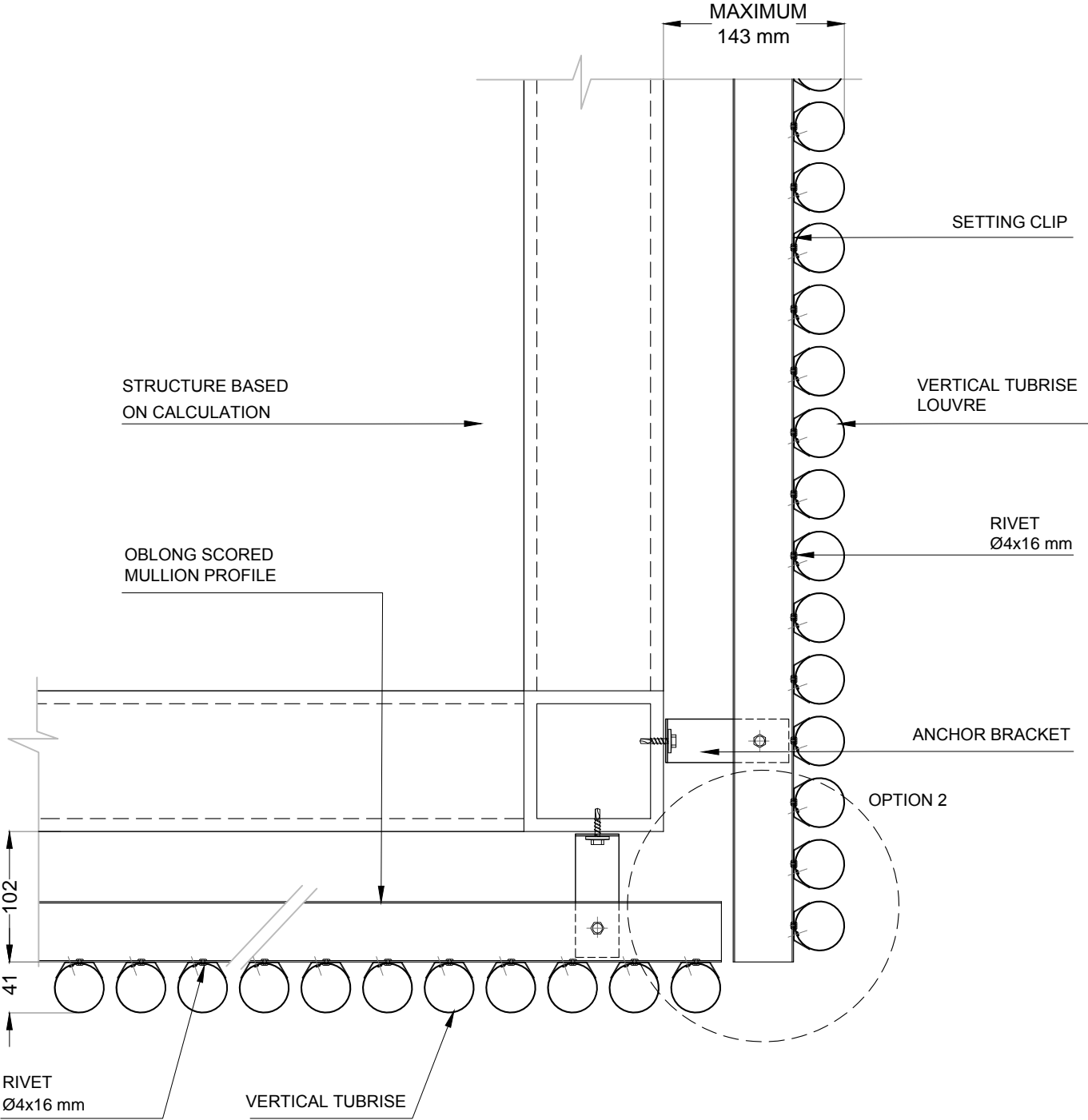
E-E CUT
VERTICAL APPLICATION
TUBRISE

CUT F - F
VERTICAL APPLICATION
CORNER MEETING-OPTION 1



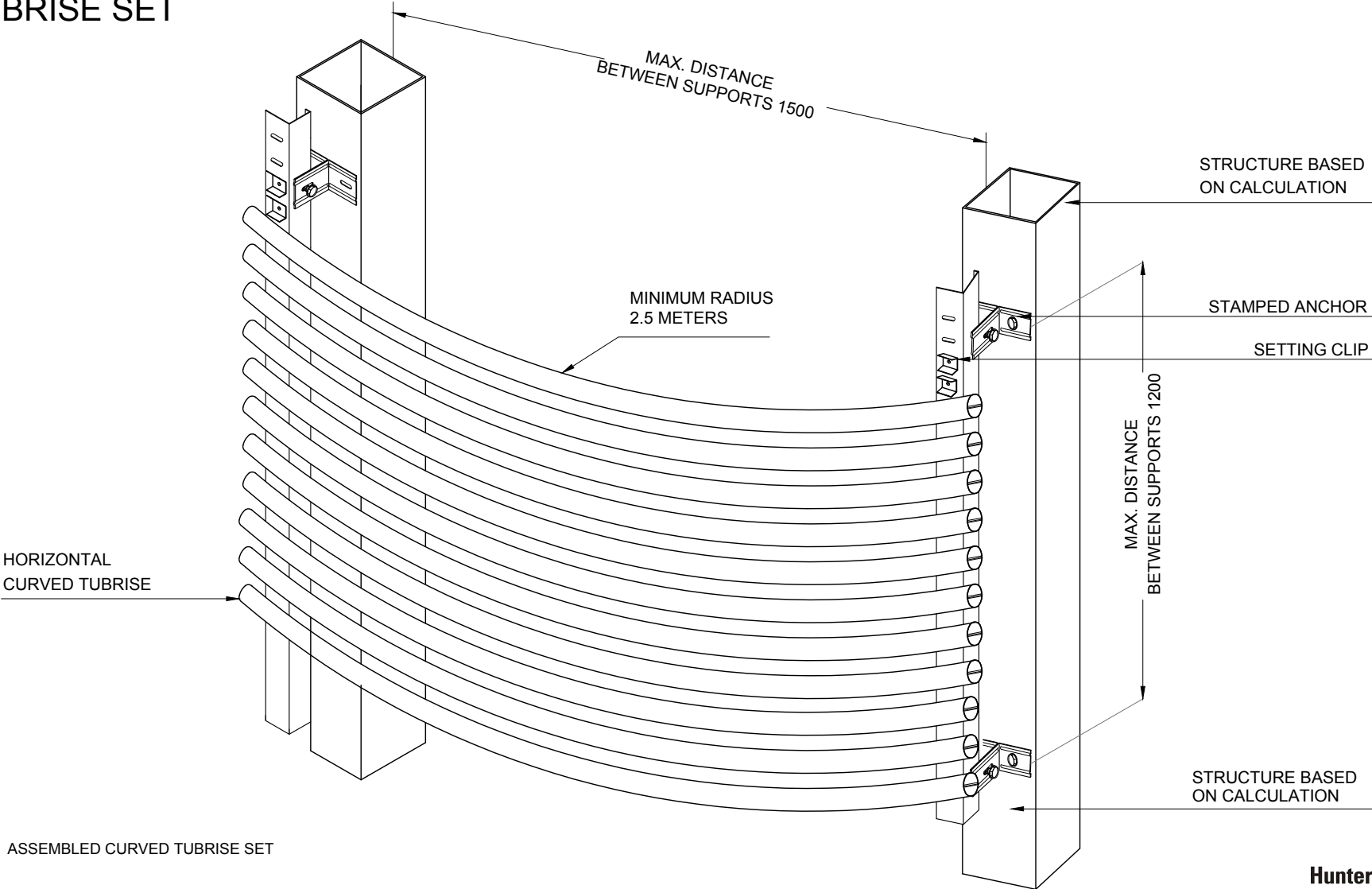
CUT B-B
HORIZONTAL APPLICATION - OPTION 1
TUBRISE

CUT F-F VERTICAL APPLICATION CORNER MEETING OPTION 2

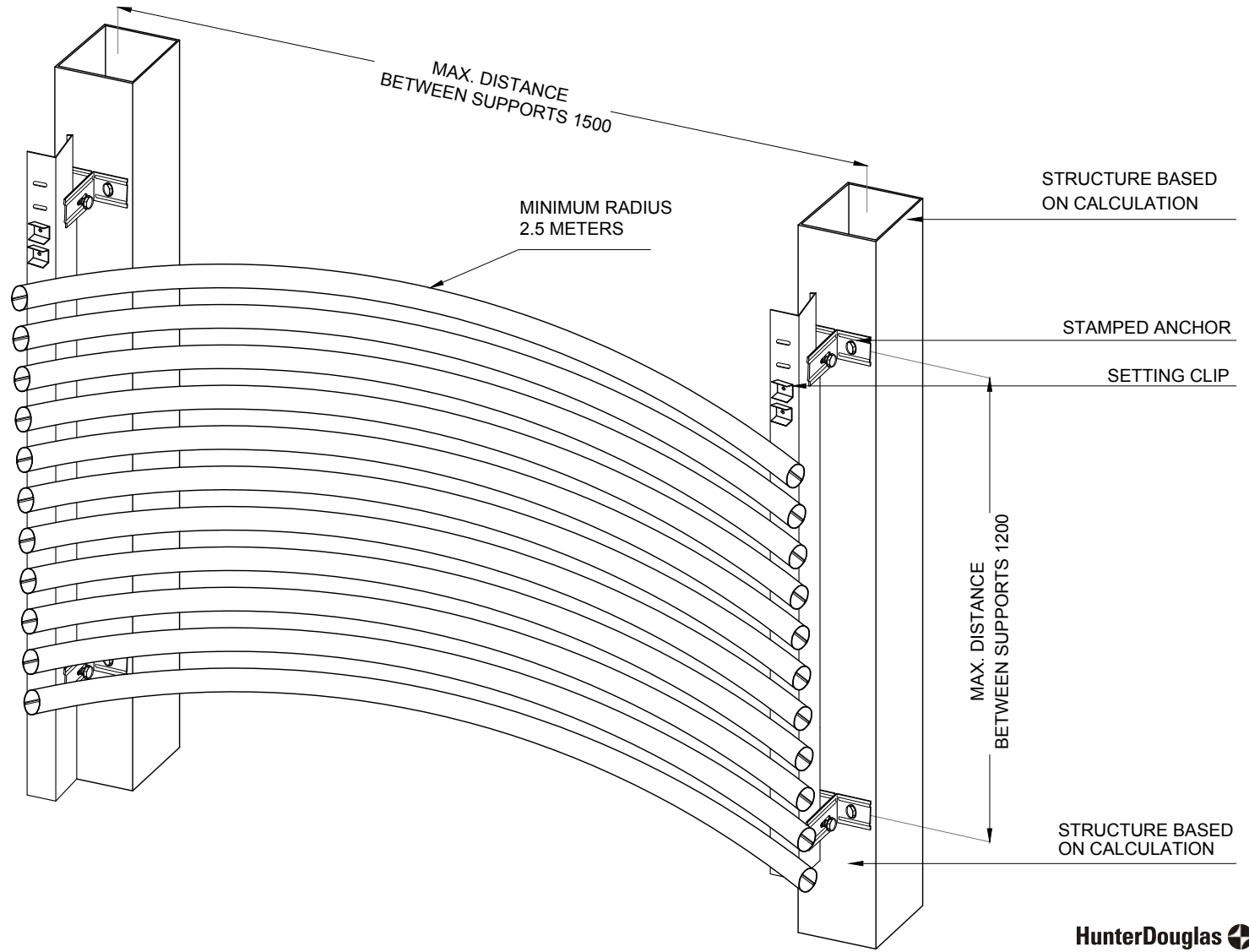


CUT B-B
HORIZONTAL APPLICATION
OPTION 2
TUBRISE

ASSEMBLED CURVED
TUBRISE SET



ASSEMBLED COUNTERCURVED
TUBRISE SET



ASSEMBLED CURVED TUBRISE SET

